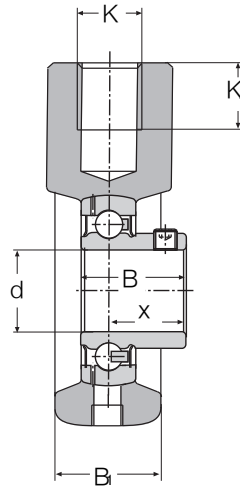
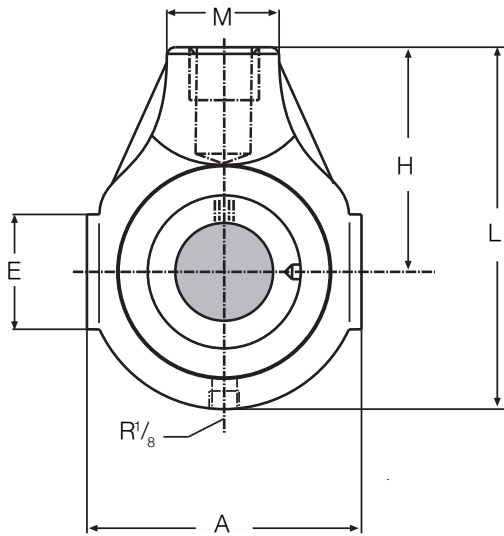


ENSEMBLE PALIER ROULEMENT

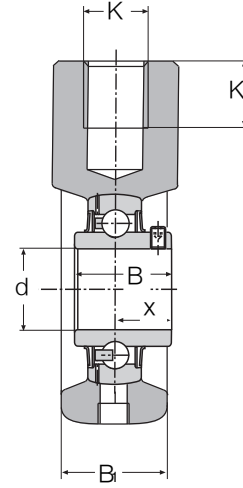


Type de série SKIS
 SKIU
 SKI

SKIH
 SKIH-R3
 SKIK

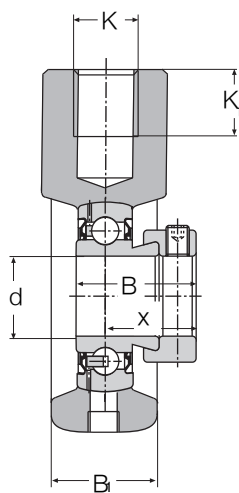


SKIS

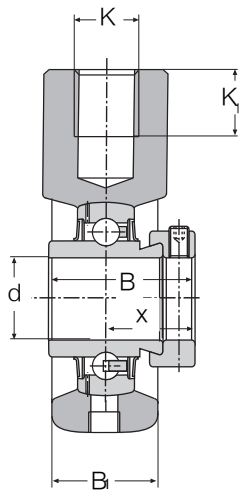


SKIU

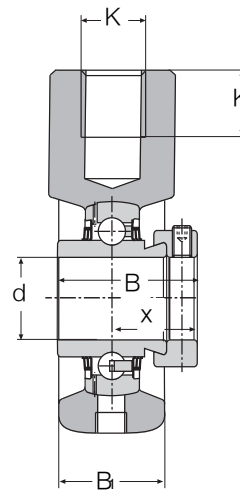
| Références de l'ensemble | Diamètre d'arbre d | Symboles des roulements | Poids kg | Dimensions en mm | | | | | | | | | | Charges | |
|--------------------------|--------------------|-------------------------|----------|------------------|-----|----|----|----|------|------|----------------|------|----------------|-----------|-------------------------|
| | | | | A | L | H | E | M | B | x | B ₁ | K | K ₁ | dyn. C kN | stat. C ₀ kN |
| SKI 20 | 20 | SA 204 | 0,55 | 65 | 91 | 58 | 38 | 30 | 31,0 | 23,5 | 31,0 | M 16 | 20 | 12,8 | 6,6 |
| SKIS 20 | | SB 204 | 0,52 | 65 | 91 | 58 | 38 | 30 | 25,0 | 18,0 | 31,0 | M 16 | 20 | 12,8 | 6,6 |
| SKIU 20 | | UC 204 | 0,55 | 65 | 91 | 58 | 38 | 30 | 31,0 | 18,3 | 31,0 | M 16 | 20 | 12,8 | 6,6 |
| SKIH 20 | | HC 204 | 0,58 | 65 | 91 | 58 | 38 | 30 | 43,7 | 26,6 | 31,0 | M 16 | 20 | 12,8 | 6,6 |
| SKIH 20 R3 | | HC 204 R3 | 0,58 | 65 | 91 | 58 | 38 | 30 | 43,7 | 26,6 | 31,0 | M 16 | 20 | 12,8 | 6,6 |
| SKI 25 | 25 | SA 205 | 0,72 | 70 | 99 | 64 | 38 | 35 | 31,0 | 23,5 | 31,0 | M 20 | 22 | 14,0 | 7,8 |
| SKIS 25 | | SB 205 | 0,68 | 70 | 99 | 64 | 38 | 35 | 27,0 | 19,5 | 31,0 | M 20 | 22 | 14,0 | 7,8 |
| SKIU 25 | | UC 205 | 0,72 | 70 | 99 | 64 | 38 | 35 | 34,1 | 19,8 | 31,0 | M 20 | 22 | 14,0 | 7,8 |
| SKIH 25 | | HC 205 | 0,78 | 70 | 99 | 64 | 38 | 35 | 44,4 | 26,9 | 31,0 | M 20 | 22 | 14,0 | 7,8 |
| SKIH 25 R3 | | HC 205 R3 | 0,78 | 70 | 99 | 64 | 38 | 35 | 44,4 | 26,9 | 31,0 | M 20 | 22 | 14,0 | 7,8 |
| SKIK 25 | 20 | UK 205 | 0,68 | 70 | 99 | 64 | 38 | 35 | 35,0 | - | 31,0 | M 20 | 22 | 14,0 | 7,8 |
| SKI 30 | 30 | SA 206 | 1,10 | 85 | 114 | 72 | 40 | 40 | 35,7 | 26,7 | 35,7 | M 24 | 25 | 19,5 | 11,3 |
| SKIS 30 | | SB 206 | 1,05 | 85 | 114 | 72 | 40 | 40 | 30,0 | 22,0 | 35,7 | M 24 | 25 | 19,5 | 11,3 |
| SKIU 30 | | UC 206 | 1,10 | 85 | 114 | 72 | 40 | 40 | 38,1 | 22,2 | 35,7 | M 24 | 25 | 19,5 | 11,3 |
| SKIH 30 | | HC 206 | 1,15 | 85 | 114 | 72 | 40 | 40 | 48,4 | 30,1 | 35,7 | M 24 | 25 | 19,5 | 11,3 |
| SKIH 30 R3 | | HC 206 R3 | 1,15 | 85 | 114 | 72 | 40 | 40 | 48,4 | 30,1 | 35,7 | M 24 | 25 | 19,5 | 11,3 |
| SKIK 30 | 25 | UK 206 | 1,05 | 85 | 114 | 72 | 40 | 40 | 38,0 | - | 35,7 | M 24 | 25 | 19,5 | 11,3 |
| SKI 35 | 35 | SA 207 | 1,30 | 90 | 122 | 76 | 49 | 40 | 38,9 | 29,4 | 38,9 | M 24 | 25 | 25,5 | 15,3 |
| SKIS 35 | | SB 207 | 1,20 | 90 | 122 | 76 | 49 | 40 | 32,0 | 23,5 | 38,9 | M 24 | 25 | 25,5 | 15,3 |
| SKIU 35 | | UC 207 | 1,30 | 90 | 122 | 76 | 49 | 40 | 42,9 | 25,4 | 38,9 | M 24 | 25 | 25,5 | 15,3 |
| SKIH 35 | | HC 207 | 1,40 | 90 | 122 | 76 | 49 | 40 | 51,1 | 32,3 | 38,9 | M 24 | 25 | 25,5 | 15,3 |
| SKIH 35 R3 | | HC 207 R3 | 1,40 | 90 | 122 | 76 | 49 | 40 | 51,1 | 32,3 | 38,9 | M 24 | 25 | 25,5 | 15,3 |
| SKIK 35 | 30 | UK 207 | 1,20 | 90 | 122 | 76 | 49 | 40 | 43,0 | - | 38,9 | M 24 | 25 | 25,5 | 15,3 |



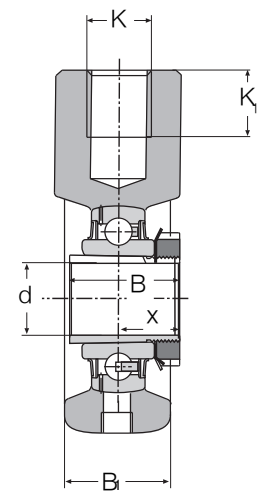
SKI



SKIH



SKIH-R3



SKIK

| Références de l'ensemble | Diamètre d'arbre d | Symboles des roulements | Poids kg | Dimensions en mm | | | | | | | | | | Charges | |
|--------------------------|--------------------|-------------------------|----------|------------------|-----|-----|----|----|------|------|----------------|------|----------------|-----------|-------------------------|
| | | | | A | L | H | E | M | B | x | B ₁ | K | K ₁ | dyn. C kN | stat. C ₀ kN |
| SKI 40 | 40 | SA 208 | 1,65 | 100 | 135 | 85 | 45 | 40 | 43,7 | 32,7 | 43,7 | M 24 | 25 | 32,5 | 19,8 |
| SKIS 40 | | SB 208 | 1,55 | 100 | 135 | 85 | 45 | 40 | 34,0 | 25,0 | 43,7 | M 24 | 25 | 32,5 | 19,8 |
| SKIU 40 | | UC 208 | 1,65 | 100 | 135 | 85 | 45 | 40 | 49,2 | 30,2 | 43,7 | M 24 | 25 | 32,5 | 19,8 |
| SKIH 40 | | HC 208 | 1,80 | 100 | 135 | 85 | 45 | 40 | 56,3 | 34,9 | 43,7 | M 24 | 25 | 32,5 | 19,8 |
| SKIH 40 R3 | | HC 208 R3 | 1,80 | 100 | 135 | 85 | 45 | 40 | 56,3 | 34,9 | 43,7 | M 24 | 25 | 32,5 | 19,8 |
| SKIK 40 | 35 | UK 208 | 1,55 | 100 | 135 | 85 | 45 | 40 | 46,0 | - | 43,7 | M 24 | 25 | 32,5 | 19,8 |
| SKI 50 | 50 | SA 210 | 1,90 | 110 | 145 | 90 | 46 | 40 | 43,7 | 32,7 | 43,7 | M 24 | 25 | 35,0 | 23,2 |
| SKIS 50 | | SB 210 | 1,75 | 110 | 145 | 90 | 46 | 40 | 43,5 | 32,6 | 43,7 | M 24 | 25 | 35,0 | 23,2 |
| SKIU 50 | | UC 210 | 1,90 | 110 | 145 | 90 | 46 | 40 | 51,6 | 32,6 | 43,7 | M 24 | 25 | 35,0 | 23,2 |
| SKIH 50 | | HC 210 | 2,15 | 110 | 145 | 90 | 46 | 40 | 62,7 | 38,1 | 43,7 | M 24 | 25 | 35,0 | 23,2 |
| SKIH 50 R3 | | HC 210 R3 | 2,15 | 110 | 145 | 90 | 46 | 40 | 62,7 | 38,1 | 43,7 | M 24 | 25 | 35,0 | 23,2 |
| SKIK 50 | 45 | UK 210 | 1,75 | 110 | 145 | 90 | 46 | 40 | 55,0 | - | 43,7 | M 24 | 25 | 35,0 | 23,2 |
| SKI 60 | 60 | SA 212 | 3,65 | 143 | 175 | 104 | 50 | 60 | 53,1 | 39,6 | 53,3 | M 24 | 25 | 52,0 | 36,0 |
| SKIU 60 | | UC 212 | 3,50 | 143 | 175 | 104 | 50 | 60 | 65,1 | 39,7 | 53,3 | M 24 | 25 | 52,0 | 36,0 |
| SKIH 60 | | HC 212 | 3,70 | 143 | 175 | 104 | 50 | 60 | 77,7 | 46,8 | 53,3 | M 24 | 25 | 52,0 | 36,0 |
| SKIH 60 R3 | | HC 212 R3 | 3,70 | 143 | 175 | 104 | 50 | 60 | 77,7 | 46,8 | 53,3 | M 24 | 25 | 52,0 | 36,0 |
| SKIK 60 | 55 | UK 212 | 3,40 | 143 | 175 | 104 | 50 | 60 | 65,0 | - | 53,3 | M 24 | 25 | 52,0 | 36,0 |